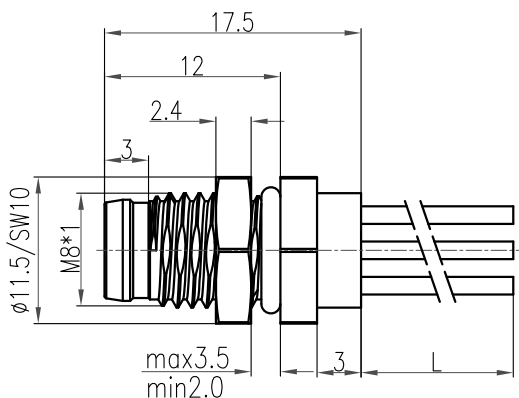


技术参数:

- 额定电流(40℃): 4A
- 额定电压: 60V
- 额定脉冲电压: 800V
- 插针数: 3
- 污染等级: 3
- 接触电阻: $\leq 10m\Omega$
- 绝缘电阻: $\geq 100M\Omega$
- 锁紧方式: 螺纹式M8*1
- 连接方式: 预接导线0.25mm²
- 防护等级: IP67
- 插拔次数: ≥ 100
- 温度范围: -40℃ ... +85℃
- 外壳材料: CuZn
- 插体材料: PA
- 插针材料: 铜合金
- 电镀材料: 金

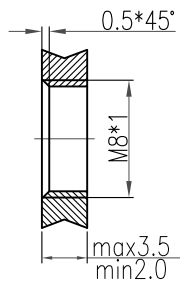
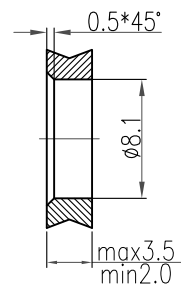
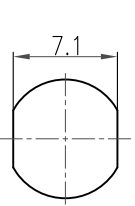
Technical specification:

- Rated current (40℃): 4A
- Rated voltage: 60V
- Rated impulse voltage: 800V
- Number of contacts: 3
- Pollution degree: 3
- Contact resistance: $\leq 10m\Omega$
- Insulation resistance: $\geq 100M\Omega$
- Connector locking system: screw M8*1
- Terminal: single-strand wires 0.25mm²
- Degree of protection: IP67
- Mating cycles: ≥ 100
- Temperature range: -40℃ ... +85℃
- Material of housing: CuZn
- Material of insert: PA
- Material of contact: copper alloy
- Contact plating: Au



带线长度L=0.2m, 如需其它长度在型号后+“-1.0”、“-2.0”
 Cable length L=0.2m, For other lengths please add “-1.0”、“-2.0”after the type

标记 Mark	处数 Number	变更描述/Description	签名 Signature	日期 Date
姓名/Name	日期/Date	姓名/Name	日期/Date	
绘图 Drawn	TC CHEN	12.09.2014	标准化 Stand.	-
审核 Checked	ZM LIN	12.09.2014		
工艺 Process	-	-	批准 Approved	YY LUO 12.09.2014



通孔安装
With bore hole

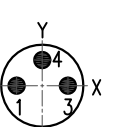
螺纹安装
With thread to screw in

拧紧力矩(Tightening moment):1Nm

面板安装尺寸
Panel Cut-out

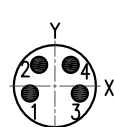
针位图
Contact arrangements

3Pin



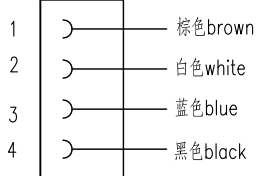
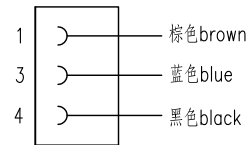
	X	Y
1	-1.75	0.00
2	-	-
3	1.75	0.00
4	0.00	1.75

4Pin



	X	Y
1	-1.70	-0.50
2	-1.08	1.45
3	1.70	-0.50
4	1.08	1.45

接线图
Circuit diagram



表面处理 Finish	-	图号 Drawing No.	-
材料 Material	-	产品代号 Part Code	M8-M03-BKR-M8-W0.25
比例 Scale	2:1	产品料号 Part No.	1620033014011
版本 REV.	V1.0	产品名称 Part Name	-
重量 Weight	7.6g	厦门唯恩电气有限公司 XIAMEN WAIN ELECTRICAL CO.LTD	
数量 Qty.	-		
All Dimensions in mm Original Size DIN A 4			