

日期/Date
 档案员
 Filing Clerk

技术参数:
 - 产品系列: M12 A-Code
 - 插针数: 4, 5, 8
 - 额定电流(40°C): 4A(4\5-pole), 2A(8-pole)
 - 额定电压: 250V(4-pole), 125V(5-pole), 60V(8-pole)
 - 额定脉冲电压: 2500V(4-pole), 1500V(5-pole), 800V(8-pole)
 - 污染等级: 3
 - 接触电阻: ≤10mΩ
 - 绝缘电阻: ≥100MΩ
 - 锁紧方式: 螺纹式M12*1
 - 连接方式: 预接导线0.25mm² (AWG24)

- 防护等级: IP67
 - 插拔次数: ≥100
 - 温度范围: -40°C ... +85°C
 - 外壳材料: 铸锌镀镍
 - 插体材料: PA
 - 插针材料: 铜合金
 - 插针电镀材料: 金

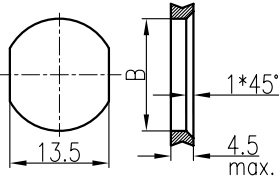
Technical specification:

- Series: M12 A-Code
 - Number of contacts: 4, 5, 8
 - Rated current (40°C): 4A(4\5-pole), 2A(8-pole)
 - Rated voltage: 250V(4-pole), 125V(5-pole), 60V(8-pole)
 - Rated impulse voltage: 2500V(4-pole), 1500V(5-pole), 800V(8-pole)

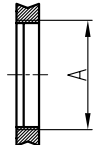
- Pollution degree: 3
 - Contact resistance: ≤10mΩ
 - Insulation resistance: ≥100MΩ
 - Connector locking system: screw M12*1
 - Terminal: dip single-strand wires 0.25mm²(AWG24)
 - Degree of protection: IP67
 - Mating cycles: ≥100
 - Temperature range: -40°C ... +85°C
 - Material of housing: Zinc diecasting nickel plated
 - Material of insert: PA
 - Material of contact: copper alloy
 - Contact plating: Au

面板安装尺寸
 Panel Cut-out

通孔安装
 With bore hole

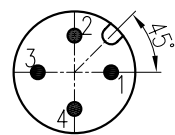


螺纹安装
 With thread to screw in



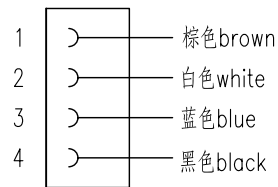
	A	B
PG9	PG9	∅15.3
M16x1.5	M16x1.5	∅16.1

针位图
 Contact arrangements

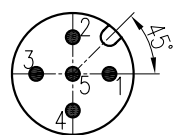


	X	Y
1	2.50	0.00
2	0.00	2.50
3	-2.50	0.00
4	0.00	-2.50

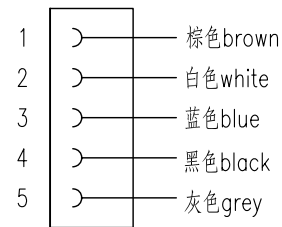
接线图
 Circuit diagram



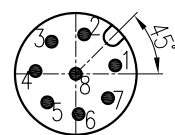
5-Pole



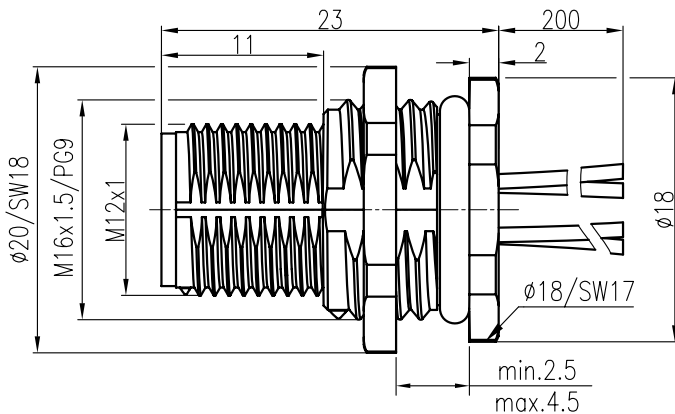
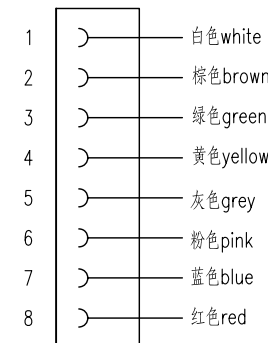
	X	Y
1	2.50	0.00
2	0.00	2.50
3	-2.50	0.00
4	0.00	-2.50
5	0.00	0.00



8-Pole



	X	Y
1	2.69	0.57
2	0.57	2.69
3	-1.66	2.20
4	-2.75	0.19
5	-1.94	-1.94
6	0.19	-2.74
7	2.20	-1.65
8	0.00	0.00



带线长度L=0.2m, 如需其它长度在型号后+“-1.0”、“-2.0”
 Cable length L=0.2m, For other lengths please add “-1.0”、“-2.0”after the type

插针数 Contacts	产品料号 Cable outlet	型号 Part Code	重量 Weight
4	1630043014011	M12-M04A-BKR-PG9-W0.25	15.6 g
	1630043014031	M12-M04A-BKR-M16-W0.25	15.6 g
5	1630053014011	M12-M05A-BKR-PG9-W0.25	16.6 g
	1630053014031	M12-M05A-BKR-M16-W0.25	16.6 g
8	1630083014011	M12-M08A-BKR-PG9-W0.25	19.2 g
	1630083014031	M12-M08A-BKR-M16-W0.25	19.2 g

标记 Mark		处数 Number	变更描述/Description		签名 Signature	日期 Date	表面处理 Finish				图号 Drawing No.	
姓名/Name		日期/Date	姓名/Name		日期/Date	材料 Material				产品代号 Part Code		
绘图 Drawn		HQ ZHANG	21.04.2014	标准 Stand.		-	比例 Scale				产品名称 Part Name	
审核 Checked		ZM LIN	21.04.2014	批准 Approved		YY LUO	21.04.2014	版本 REV.	重量 Weight	数量 Qty.	All Dimensions in mm Original Size DIN A 4	
工艺 Process		-	-	YY LUO		21.04.2014	厦门唯恩电气有限公司 XIAMEN WAIN ELECTRICAL CO.LTD					