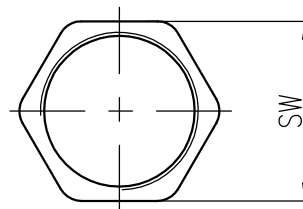
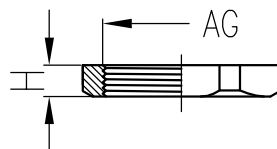


|         |                     |
|---------|---------------------|
| 日期/Date | 档案员<br>Filing Clerk |
|---------|---------------------|

| M公制螺纹/Metric Thread |                   |                  |                       |                       |                  |                |
|---------------------|-------------------|------------------|-----------------------|-----------------------|------------------|----------------|
| 序号<br>No.           | 产品名称<br>Part code | 产品料号<br>Part NO. | 螺纹规格AG<br>Thread size | 扳手尺寸SW<br>Wrench size | 厚度H<br>Thickness | 重量/Weight<br>g |
| 1                   | WNAP-M12B/S       | 1021060112102    | M12*1.5               | 19                    | 5                | 1              |
| 2                   | WNAP-M16B/S       | 1021060132102    | M16*1.5               | 22                    | 5                | 1.2            |
| 3                   | WNAP-M18B/S       | 1021060142102    | M18*1.5               | 24                    | 5                | 1.6            |
| 4                   | WNAP-M20B/S       | 1021060152102    | M20*1.5               | 27                    | 6                | 2.2            |
| 5                   | WNAP-M22B/S       | 1021060162102    | M22*1.5               | 30                    | 6                | 2.8            |
| 6                   | WNAP-M24B/S       | 1021060172102    | M24*1.5               | 30                    | 6                | 3              |
| 7                   | WNAP-M25B/S       | 1021060182102    | M25*1.5               | 32                    | 7                | 3.1            |
| 8                   | WNAP-M32B/S       | 1021060192102    | M32*1.5               | 40                    | 7                | 4.7            |
| 9                   | WNAP-M40B/S       | 1021060202102    | M40*1.5               | 49                    | 8                | 7.5            |
| 10                  | WNAP-M50B/S       | 1021060462102    | M50*1.5               | 60                    | 8                | 14.3           |
| 11                  | WNAP-M63B/S       | 1021060482102    | M63*1.5               | 75                    | 8                | 12.3           |

| PG制螺纹/PG Thread |                   |                  |                       |                       |                  |                |
|-----------------|-------------------|------------------|-----------------------|-----------------------|------------------|----------------|
| 序号<br>No.       | 产品名称<br>Part code | 产品料号<br>Part NO. | 螺纹规格AG<br>Thread size | 扳手尺寸SW<br>Wrench size | 厚度H<br>Thickness | 重量/Weight<br>g |
| 1               | WNAP-PG7B/S       | 1021060012102    | PG7                   | 19                    | 5                | 1.2            |
| 2               | WNAP-PG9B/S       | 1021060022102    | PG9                   | 21                    | 5                | 1.35           |
| 3               | WNAP-PG11B/S      | 1021060032102    | PG11                  | 24                    | 5                | 2              |
| 4               | WNAP-PG13.5B/S    | 1021060042102    | PG13.5                | 27                    | 6                | 2.1            |
| 5               | WNAP-PG16B/S      | 1021060052102    | PG16                  | 30                    | 6                | 2.4            |
| 6               | WNAP-PG21B/S      | 1021060062102    | PG21                  | 36                    | 7                | 3.8            |
| 7               | WNAP-PG29B/S      | 1021060072102    | PG29                  | 45                    | 7                | 5.8            |
| 8               | WNAP-PG36B/S      | 1021060082102    | PG36                  | 60                    | 8                | 12.6           |
| 9               | WNAP-PG42B/S      | 1021060092102    | PG42                  | 65                    | 8                | 15             |
| 10              | WNAP-PG48B/S      | 1021060102102    | PG48                  | 69.5                  | 8                | 16.8           |



技术参数:

- 材料:

- 主体: 尼龙66
- 颜色: 黑色

- 温度范围: -40℃-100℃, 短时间可以达到120℃

Technical specification:

- Material:

- Body: polyamide
- Sealing: black

- Temperature range: -40℃-100℃, short-term 120℃

|               |              |                  |                |         |                 |                |            |   |            |   |                   |                  |
|---------------|--------------|------------------|----------------|---------|-----------------|----------------|------------|---|------------|---|-------------------|------------------|
|               |              |                  |                |         |                 | 表面处理<br>Finish | -          |   |            |   | 图号<br>Drawing No. | -                |
|               |              |                  |                |         |                 | 材料<br>Material | -          |   |            |   | 产品代号<br>Part Code | WNAP-XXB/S       |
| 标记<br>Mark    | 处数<br>Number | 变更描述/Description |                |         | 签名<br>Signature |                | 日期<br>Date |   |            |   |                   | 产品料号<br>Part No. |
|               | 姓名/Name      | 日期/Date          |                | 姓名/Name | 日期/Date         | 比例<br>Scale    | 版本<br>REV. | 重量<br>Weight                                  | 数量<br>Qty. | 产品名称<br>Part Name                           |                   |                  |
| 绘图<br>Drawn   | BQ LUO       | 18.10.2010       | 标准化<br>Stand.  | -       | -               | 1:1            | V1.0       | -   | -          | -   |                   |                  |
| 审核<br>Checked | P RAO        | 18.10.2010       |                |         |                 |                |            |   |            | -   |                   |                  |
| 工艺<br>Process | -            | -                | 批准<br>Approved | YY LIN  | 18.10.2010      |                |            | All Dimensions in mm<br>Original Size DIN A 4 |            | 厦门唯恩电气有限公司<br>XIAMEN WAIN ELECTRICAL CO.LTD |                   |                  |